



CONSULTING ENGINEERING INCORPORATION

[www.eser.com.tr](http://www.eser.com.tr)

*since 1968*



**KEY REFERENCES**

**MOTORWAYS**  
**STATE HIGHWAYS**







**500 km**

**Construction Supervision  
Construction Management  
Commissioning  
Start-up Inspections**

**Total 500 km Separated State Highway  
Infrastructure & Superstructure Works**

**Separated State Highway Sections**

Bitlis - Tatvan Junction - Mus (68 km)

Mus Junction - 9. Dist. Border (10 km)

Adilcevaz - Ercis (14 km)

Ahlat City Crossing (5 km)

Tatvan - Bitlis Junction - Ahlat (33 km)

Ahlat - Adilcevaz (12 km)

Ercis - Muradiye - Caldıran (14 km)

Van - (Hakkari - Yüksekova) Junction - DAP (6 km)

Ercis - Patnos (58 km)

Van - Ozalp - Kapıkoy (50 km)

Mus Varto Junction - 8. Dist. Border (15 km)

Mus Junction - Kizilagaç (10 km)

Yüksekova Perimeter Highway (7 km)

Muradiye - Caldıran (7 km)

Ozalp - Kapıkoy Border Gate (10 km)

Baskale Hakkari Junction - Esendere (65 km)

Hakkari - Yüksekova (400-36) (3 km)

Erziki - Ordekli (19 km)

Yüksekova - Daglica (54 km)

Ozalp - Saray Junction - Dorutay (24 km)

Ozalp - Dorutay Junction - Saray (10 km)

Ozalp City Crossing (6 km)

**Tunnels**

Cukurca Tunnel (Single Tube, 801 m, Dia. 5.35 m)

8 August Tunnel (Single Tube, 1,981 m, Dia. 5.35 m)

T2 Tunnel (Single Tube, 618 m, Dia. 5.35 m)

T3 Tunnel (Single Tube, 418 m, Dia. 5.35 m)

T5 Tunnel (Double Tube, 140/160 m, Dia. 5.35 m)







**32.4 km**

**Construction Supervision  
Construction Management  
Commissioning  
Start-up Inspections**

**Antalya - Alanya State Highway  
Section 4 (109+000 - 141+400)**

**Total Length (32.4 km)**

**Project Speed (90 km/h)**

**2 x 3 lanes each 3.50 m**

**Platform Width (2 x 11.50 m)**

**5 Bridge (266.8 m)**

**5 Tunnel (1,882 m)**

**115 Box Culvert (5,750 m)**

**35 Underpass (1,750 m)**

**14 Retaining Wall (6,142 m)**

**Landscaping**

**Waste Water Systems**

**Storm Water Systems**

**Irrigation Systems**

**Highway Lighting**

**Tunnel Lighting System**

**Traffic Signs**





**17 km**

**Detailed Engineering  
Geophysical Studies  
Geotechnical Studies  
Topographical Surveys**

**From Ministry of Transportation  
to Umitkoy Junction (11.77 km)**

**8 Lanes each 3,50 m**

**Platform Width (36.5 m)**

**From Hacettepe Junction  
to Angora (5.24 km)**

**4 Lanes each 3,50 m**

**Platform Width (17 m)**

**3 New Junction with Bridge (5.2 km)**

**4 Expansion of Existing Junction**

**6 Box Culvert**

**3 Overpass, 1 Underpass**

**Landscaping**

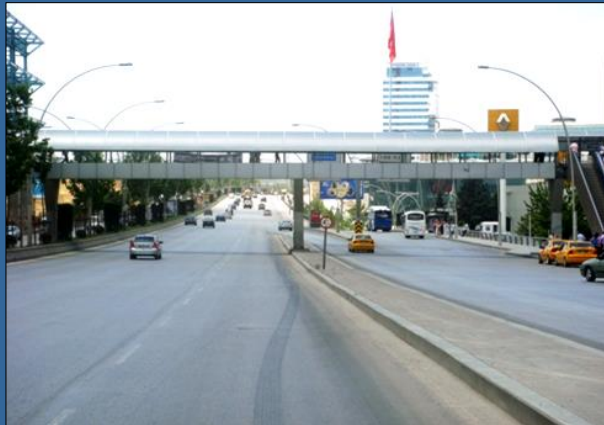
**Waste Water Systems**

**Storm Water Systems**

**Irrigation Systems**

**Highway Lighting**

**Traffic Signs**







**56.5 km**

Environmental Impact Study  
Detailed Engineering  
Cost Estimations  
Feasibility Study  
Tender Documentation  
Geophysical Studies  
Geotechnical Studies  
Basic Engineering  
Topographical Surveys  
Transportation Study

**Istanbul-Bursa-Balıkesir-Izmir Motorway**  
**Manisa-Izmir Section (56.5 km)**  
**(Km : 352+000 - 408+569)**



**Platform Width (35.50 m)**  
**Turgutlu Connection Road (2.3 km)**  
**Kemalpasa Connection Road (6.5 km)**  
**Belkahve Viaduct (405 m)**  
**Belkahve Tunnel (1,750 m)**  
**9 Junction with Bridge (315 m)**  
**10 River Bridge (1,293 m)**  
**5 Overpass Bridge (307 m)**  
**25 Underpass Bridge (663 m)**  
**100 Box Culvert (2,700 m)**  
**Retaining Wall (4,114 m)**  
**17 Underpass**  
**Maintenance and Operation Area**  
**Service Area**  
**2 Toll Collection Area**  
**Landscaping**  
**Storm Water Systems**  
**Motorway Lighting System**  
**Tunnel Lighting System**  
**Traffic Signs**





**18 km**  
**World Bank Financed**



Detailed Engineering  
Economic and Financial Analysis  
Cost Estimations  
Tender Documentation  
Construction Specifications  
Geophysical Studies  
Geotechnical Studies  
Basic Engineering  
Topographical Surveys  
Transportation Study



Access Controlled 18 km Peripheral Highway  
According to World Bank Criterias

- 8 Junction with Bridge
- 6 Junction with Surface Crossing
- 9 Precast Concrete Bridge
- 1 Composite Railway Bridge
- 1 Concrete River Bridge
- Drainage and Discharge Systems
- 3 River Bed Regulation Project
- Retaining Walls
- Access Roads
- Perimeter Security Fence
- Steel and Concrete Barriers
- Landscaping
- Highway Lighting System





**8,7 km**

**Detailed Engineering**  
**Economic and Financial Analysis**  
**Cost Estimations**  
**Tender Documentation**  
**Construction Specifications**  
**Geophysical Studies**  
**Geotechnical Studies**  
**Basic Engineering**  
**Topographical Surveys**  
**Transportation Study**

**8.7 km State Highway**

**3 Junction**

**5 Bridge**







**25,1 km**

**Tender Evaluation  
Construction Supervision  
Construction Management  
Project Management**

## **Bolu City Renewal of Roads at South (15.3 km)**

**Ismetpasa Street : 1150 m x 10 m**

**Konuralp Street : 1400 m x 12 m**

**Golyuzu District : 600 m x 15 m**

**Ahmet Yesevi Street : 700 m x 11 m**

**Southeast Ring Road : 2100 m x 19 m**

**Pasakoy Road : 1600 m x 14 m**

**Asiklar Road - Fen Lisesi : 2700 m x 10 m**

**Koc School - Aygunduz : 1100 m x 19 m**

**University Road : 2150 m x 20 m**

**Izzet Baysal Street : 1800 m x 10 m**



## **Bolu City Renewal of Roads at North (9.8 km)**

**Back of Forestry Directorate : 450 m x 20 m**

**Back of Ataturk Forest Park : 300 m x 15 m**

**Bolmar - Sedas : 1950 m x 12 m**

**Dodurga - Sedas : 4900 m x 7 m**

**Saglik District : 2200 m x 15 m**







**75 km**

**9006**



**Bergama - Akhisar Highway (75 km)**

State Highway : 59 km

City Crossing : 16 km

2 x 2 Lane, Platform Width (12 m)

112 Box Culvert

23 Junction, 11 Bridge

Detailed Engineering



**146 km**

**0107**



**Kayseri - Kirsehir Highway (146 km)**

2 x 2 Lane

Platform Width (24 m)

104 Box Culvert

29 Junction

4 Bridge

Detailed Engineering



**58 km**

**0518**



**Elazig - Maden Highway (58 km)**

2 x 2 Lane

Platform Width (24 m)

6 Junction

1 Tunnel

Detailed Engineering





**68 km**

**0011**



**Carsibasi - Arakli Highway (68 km)**

**2 x 2 Lane**

**Platform Width (24 m)**

**94 Box Culvert**

**Retaining Wall (3000 m)**

**12 Junction**

**Detailed Engineering**



**39.6 km**

**9515**



**Adapazari - Kandira Highway (39.6 km)**

**2 Lane**

**Platform Width (12 m)**

**43 Box Culvert**

**5 Junction**

**City Crossing (3 km)**

**Detailed Engineering**



**65 km**

**9105**



**Usak - Afyon Highway (65 km)**

**2 x 4 Lane**

**Platform Width (24 m)**

**83 Box Culvert**

**13 Junction**

**2 Bridge**

**Detailed Engineering**





**64 km**

**0623**



**Havsa - Kesan Highway (64 km)**

**2 x 2 Lane**

**Platform Width (24 m)**

**2 Bridge**

**134 Box Culvert**

**30 Junction**

**Detailed Engineering**



**45 km**

**0624**



**Kesan - Gelibolu Highway (45 km)**

**2 x 2 Lane**

**Platform Width (24 m)**

**2 Bridge**

**102 Box Culvert**

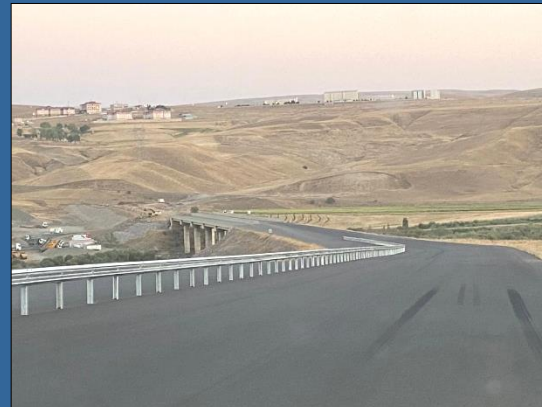
**16 Junction**

**Detailed Engineering**



**84 km**

**0626**



**Agri - Patnos Highway (84 km)**

**2 x 2 Lane**

**Platform Width (24 m)**

**28 Junction**

**5 Bridge**

**Detailed Engineering**



0814 - (Nurdagi - Hassa) Junction - Kilis State Highway

41 km State Highway, 2 Junction, 6 Bridge

0625 - Erzurum - Tortum - Uzundere State Highway

31 km State Highway, 9 Junction

0416 - (Beysehir - Yenisarbademli) Junction - Gembos State Highway

44 km State Highway, 7 Junction, 2 Bridge

0414 - Konya - Seydisehir (Km:12+000-50+000) State Highway

38 km State Highway, 13 Junction

0215 -Kayseri Stadium Junction (Kayseri Municipality)

Junction, Underpass and Overpass Bridges

0014 - (Simav - Gediz) Junction - Kusu - Selendi State Highway

46 km State Highway

9803 - Catalzeytin - Ayancik State Highway

39 km State Highway, 6 Junction

9802 - Ilyasbey - Inebolu State Highway

42 km State Highway, 5 Junction

9723 - (Sivrihisar-Polatli) Junction - Gunyuzu - Yunak State Highway

84 km State Highway, 11 km City Crossing and 9 Junction

9513 - Golköy - Aybasti State Highway

10 km State Highway

9104 - Bayburt - Ispir State Highway

50 km State Highway, 3 Bridge

9012 - Savsat - Meydancik State Highway

27 km State Highway

9011 - Dortdivan - Kartalkaya State Highway

32 km State Highway

9008 - Sarkoy - Kumbag State Highway

43 km State Highway

8805 - Kutahya - Gediz - Simav - Balikesir State Highway

52 km State Highway, 2 Bridge

8602 - Istanbul Taksim - Tarlabasi Road (Istanbul Municipality)

2 km Incity Road

8601 - Istanbul Eyup main Road (Istanbul Municipality)

1.5 km Incity Road

8402 - Kinali Junction - Adapazari Motorway

230 km Motorway Feasibility Study

7605 - Pozanti - Adana Motorway 5th Section

30 km Motorway

7604 - Izmir Peripheral Ring Road

20 km peripheral Ring Road

7603 - Zonguldak - Catalagzi State Highway

13 km State Highway, 2 Junction, Viaduct and Tunnel

7302 - Istanbul Peripheral Ring Road

14 Overpass, 9 Junction, 12 Bridge

7210 - Istanbul Peripheral Ring Road Meci,diyekoy Viaduct

1800 m Viaduct Detailed Engineering and Construction Supervision

7207 - Pozanti - Adana Motorway

4 km Motorway

7101 - Istanbul Peripheral Ring Road Ortakoy Viaducts

2300 m Viaduct

7005 - Pozanti - Adana Motorway

67 km Motorway





CONSULTING ENGINEERING INCORPORATION

[www.eser.com.tr](http://www.eser.com.tr)

[info@eser.com.tr](mailto:info@eser.com.tr)

**Hoşdere Caddesi No : 179/6**

**06540 Çankaya**

**ANKARA / TURKEY**

**Tel : +90 312 447 13 58**

**Fax : +90 312 447 13 56**